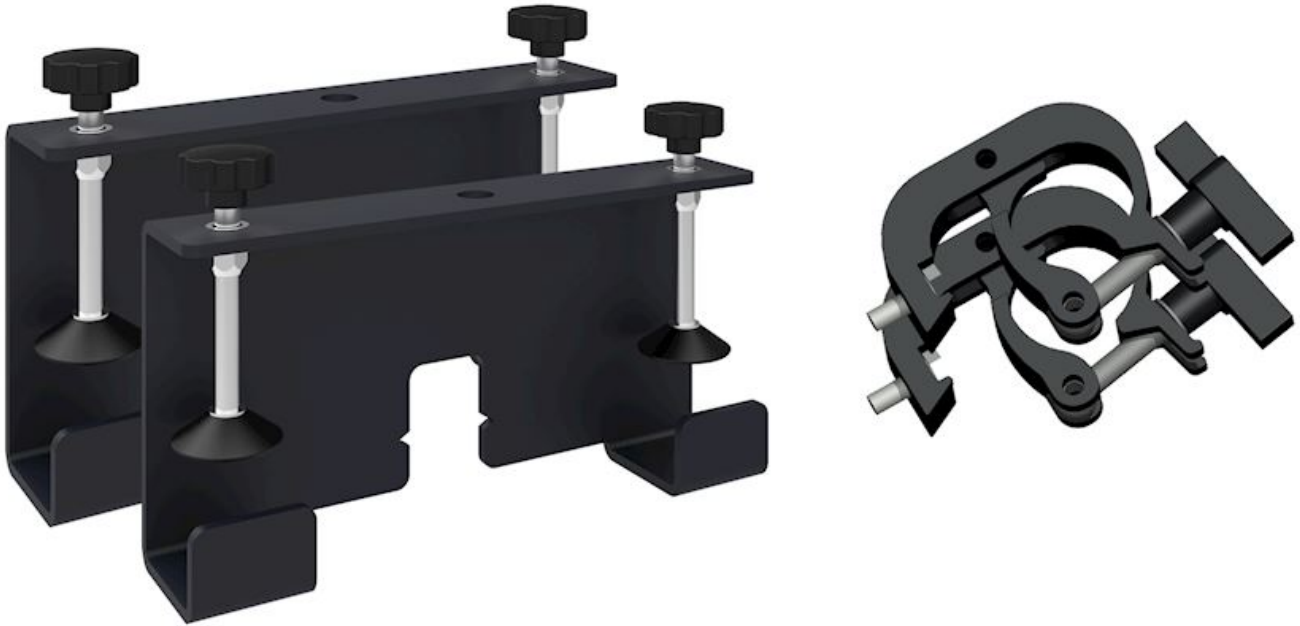


# SFFPROCLAMP

Heavy-duty trigger clamp set for truss mounting

---



- **Heavy-duty trigger clamp set for truss mounting SFFPRO1/2 flying/stacking frames**
- **2x Heavy-duty trigger clamp included**
- **2x Frame clamp mount included**

The SFFPROCLAMP is a heavy-duty trigger clamp set for use with the SFFPRO1 and SFFPRO2 flying/stacking frames. Using this clamp, you can easily mount your flying/stacking frame to trussing.

Set includes-

2x Heavy-duty trigger clamp 2x Frame clamp mount

Suitable for trussing with a maximum diameter of 51mm.

## Specifications

---